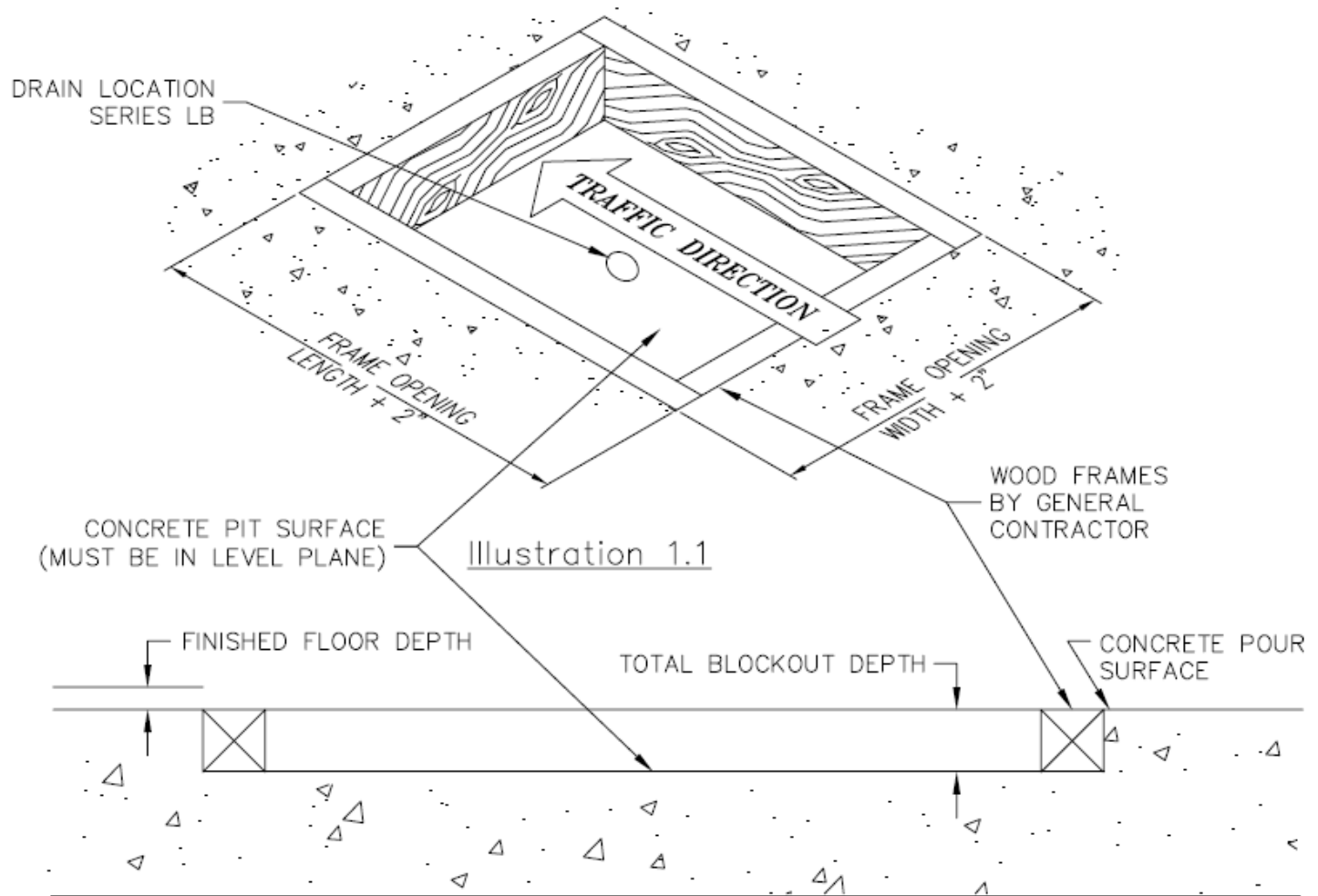


3/4" Recessed Grille Mat

Installation Instructions

Proper installation is necessary to ensure that your warranty will be honored.

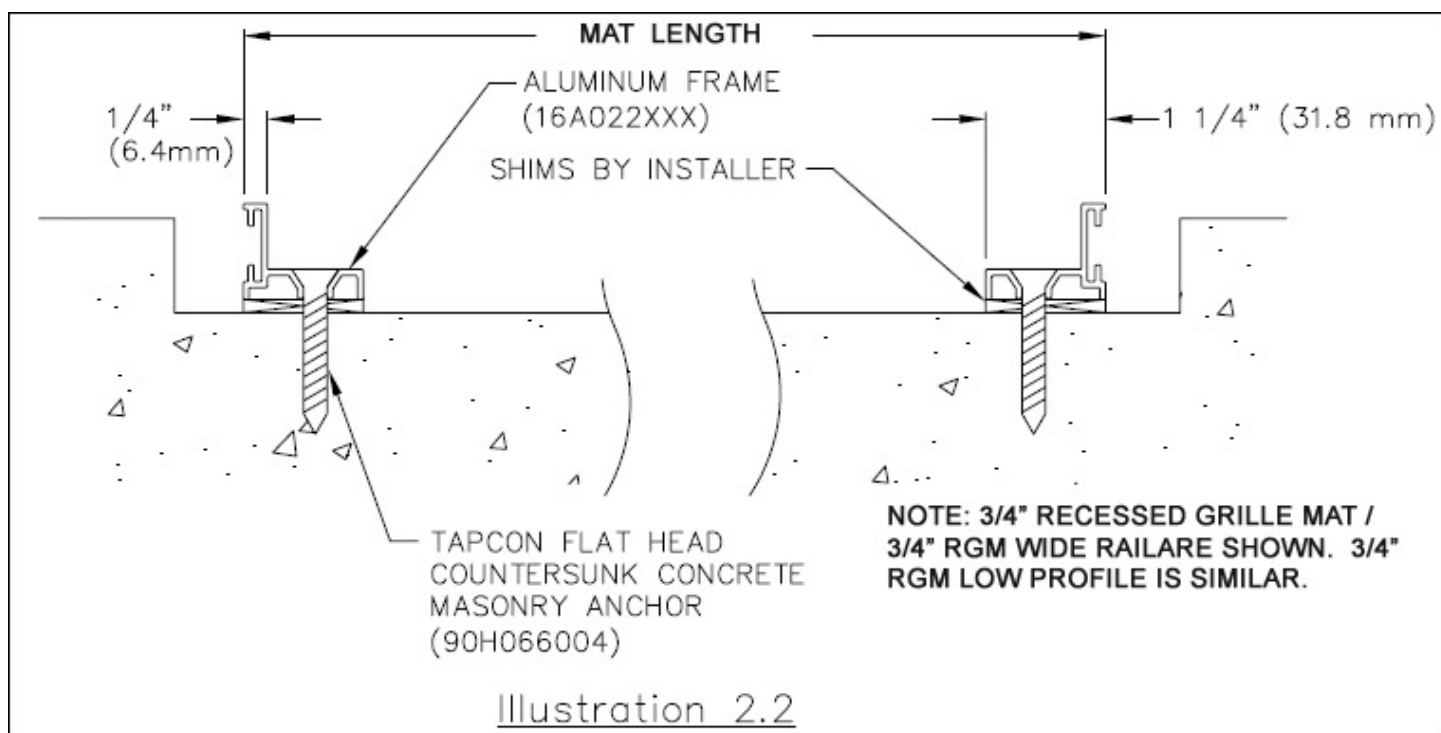
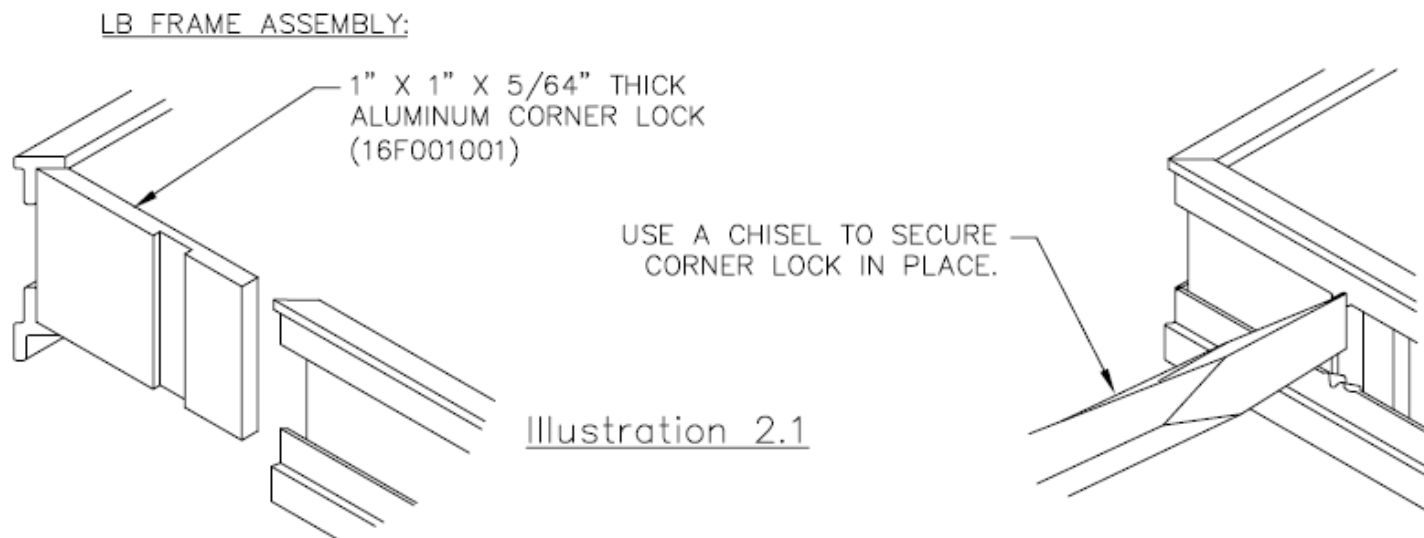
LEVEL BASE FRAME INSTALLATION



1. Before beginning any installation, **confirm** that the orientation of the tread surfaces on the grid assembly run perpendicular to the traffic direction (see Illustration 3.2).
2. Provide blackout in concrete 2" (50.8mm) greater than the actual width and length of the frame grille mat. The level base frame depth is 1" (25.4mm). Subtract the finished floor depth from the frame depth; this dimension will be the **total** blackout depth.

NOTE: Irregularities beyond the bottom leg thickness of the frame (1/4" (6.4mm)) will not allow the mat to lay flat with the top aligning in the same plane as the finished floor. This may cause tripping hazards and / or create an area of the mat to wear prematurely and thus possibly voiding the warranty.

*NOTE: See Illustrations 1.1, 1.2, 2.2 and 3.1 to ensure that the Level Base (LB) frame exposed surface will be flush with the **finished floor surface**.*



3. After the concrete has cured, remove the wood forms.
4. Assemble the pieces of the level base frame using the provided corner locks at each corner. The ends of the frame pieces have been factory mitered to permit quick assembly (see Illustration 2.1).
5. Set the frame assembly in the formed blockout, centering the assembly within the blockout (see Illustration 2.2).

6. Shim the frame assembly to locate the exposed frame surface flush with the finished floor surface (see Illustrations 2.2 and 3.1). **Confirm** both surfaces match before anchoring the frame.

NOTE: Irregular and odd-shaped grid modules require a trial fit within the frame assembly prior to anchoring the frames to ensure the correct frame location.

7. Once the assembly has been shimmed, anchor it in place using the supplied factory hardware. It is very important that the frames be installed both plumb and square.

NOTE: If necessary, brace the frames to ensure they will remain square during the grout application.

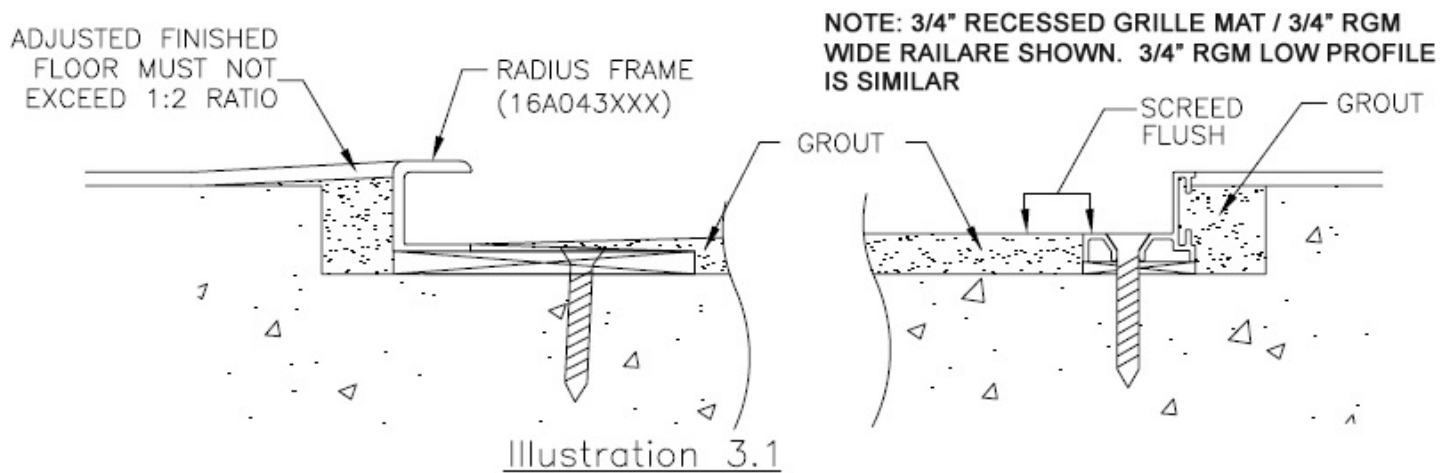
8. Clean the concrete breakout to remove all dirt, oily films and debris.

9. Grout the concrete pit surface using a waterproof, self-leveling grout. Recommended brands include:

- Quickrete: #1585 mixed with #8610 acrylic fortifier. For technical assistance, call Quickrete at 800-282-5828 (www.quickrete.com).
- VinylCrete with acrylic fortifier. For technical assistance, call UMACO, Inc. at 978-453-8881 (www.umaco.com).

A. Pour and level the grout using the legs within the frame opening as screed points (see Illustration 3.1)

B. This surface must be smooth and level to ensure proper grid installation, alignment and to prevent tripping hazards.



10. Radius frame applications: The finished floor surface must be sloped slightly to allow for the height difference to the standard level base frames.

11. Complete the frame assembly installation by applying the grout between the frame and concrete. Pour the grout flush with the surrounding concrete.

NOTE: Allow the grout material sufficient time to cure properly before inserting the grid within the framed opening.

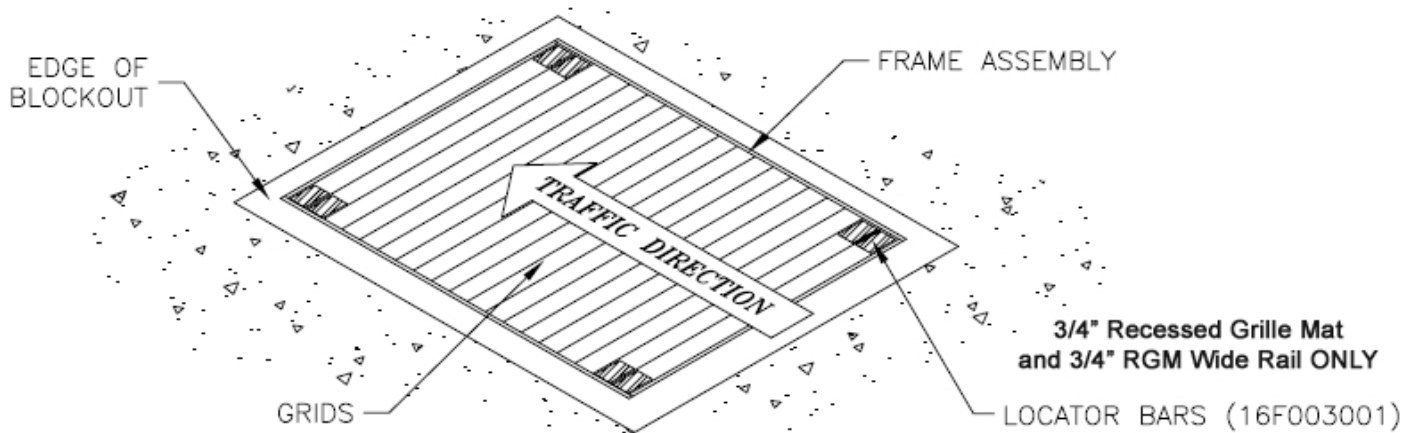


Illustration 3.2

12. Position the locator bars on the grille mat frame 1-1/2" (38.1mm) on center (two per corner) to enable the grids to remain flush with the perimeter frame. Locator bars for the 3/4" grille mat Wide Rail should be positioned 2" (50.8mm) on center and aligned with opposite legs of the endmost two adjacent rails.

A. The grid(s) are now installed within the frame by laying them into their proper position.

The installation is now complete. It is necessary to cover the installation with 3/4" (19.05mm) plywood until all additional project work is complete. Failure to do so allows the grid to be abused beyond its intended application and may void the warranty.

Illustration 4.2

